

CERTIFICATE OF ANALYSIS

PRODUCT NAME: Certified Organic CBD Tincture - Minty
PRODUCT STRENGTH: 450 mg
FILL LOT NUMBER: 201110A
TINCTURE BATCH 201117E
BEST BY DATE: 05/18/2022
HEMP EXTRACT LOT [B1014-001](#)

Click on the links to view third-party reports

Physical Attributes

| Test | Method | Specification | Results |
|-------------------------|---------|--|---------|
| Color | SOP-100 | Golden to Amber | PASS |
| Odor | SOP-100 | Characteristic - Olive and hemp, minty | PASS |
| Appearance | SOP-100 | Golden to Amber oil in brown glass bottle with dropper | PASS |
| Primary Package Eval. | SOP-132 | Container clean and free of filth. Container caps tight and shrink bands intact | PASS |
| Secondary Package Eval. | SOP-132 | Labeling Compliance Checked, Cartons sturdy and clean. Sufficient cushion material exists. Box taped and secure. | PASS |

Review of Third-Party Analysis

| Panel | Method | Specification | Results* | Pass/Fail |
|---------------------------------------|---------|---|------------------|-----------|
| Potency - Total CBD | SOP-111 | 450-562.5 mg CBD LOQ** : 10 PPM† (0.001%) | 481.2 mg | PASS |
| Potency - D9-THC | SOP-111 | None Detected LOQ: 10 PPM (0.001%) | ND | PASS |
| Compliant Pesticide Panel | SOP-111 | WIP-100008 : Product specification for Tinctures, Oregon Action limits apply | ND | PASS |
| Microbial - Stec E.Coli | SOP-111 | Complies with USP 61/62 | 6 Yck'@CE | PASS |
| Microbial - Salmonella | SOP-111 | Complies with USP 61/62 | 6 Yck'@CE | PASS |
| Microbial - Yeast and Mold | SOP-111 | Complies with USP 61/62 | 6 Yck'@CE | PASS |
| CA Compliant Heavy Metal Panel | SOP-111 | Arsenic (As): ≤1.5 PPM Cadmium (Cd): ≤0.5 PPM Mercury (Hg): ≤1.0 PPM Lead (Pb): ≤0.5 PPM | ND | PASS |

**Level of Quantitation, † Parts Per Million

Quality Certified Kei Horikawa 11/25/20
 Kei Horikawa Date
 Quality Control Manager



| | | | |
|--------------------|-----------------|---------|-----------|
| total cannabinoids | Δ^9 -THC | THCa | total THC |
| 16 mg | 0.00 mg | 0.00 mg | 0.00 mg |
| per mL | CBD | CBDa | total CBD |
| | 16.04 mg | 0.00 mg | 16.04 mg |

Lot# 201110A

This Product Has Been Tested and Complies with 7USC1639o(1) Definition of Hemp



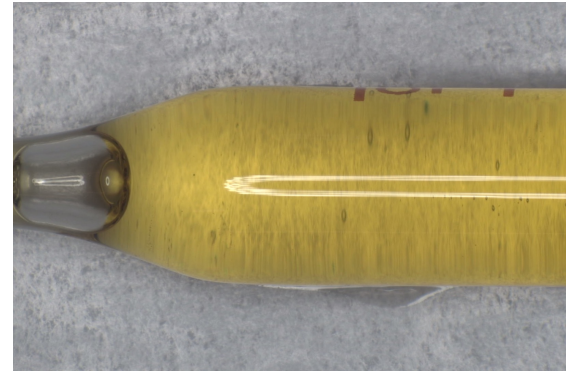
Stillwater Laboratories

<https://portal.a2la.org/scopepdf/4961-01.pdf>

Sample Handling

concentrate

| | |
|---------------------|--------------------------|
| test ID | sample wt |
| type concentrate | order 8900 |
| lab ID 0LJ59 | sample date 11/12/2020 |
| unit mL | unit weight 0.9 g |



Methods

| method | equipment |
|------------|--------------------------|
| weights | MSP-7.3.1.3 AUX120.1 |
| potency | MSP-7.5.1.5 LC-2030 |
| terpenes | MSP-7.5.1.7 QP2020/HS20 |
| pesticides | MSP-7.5.1.8 LC-8060 |
| mycotoxins | MSP-7.5.1.8 LC-8060 |
| microbial | MSP-7.5.1.1 AriaMx/Hardy |
| solvents | MSP-7.5.1.6 QP2020/HS20 |
| metals | MSP-7.5.1.1 ICPMS2030 |

| Potency | per mL | estimated error | Terpenes | % | estimated error | % | estimated error | % | estimated error |
|--|--------|--------------------|---------------------------------------|---|-----------------|---|-----------------|---|-----------------|
| tetrahydrocannabinolic acid (THCa) | 0% | 0.00 mg ± 0.02 mg | terpenes not tested / not required | | | | | | |
| Δ^9 -tetrahydrocannabinol (Δ^9 THC) | 0% | 0.00 mg ± 0.02 mg | | | | | | | |
| Δ^8 -tetrahydrocannabinol (Δ^8 THC) | 0% | 0.00 mg ± 0.02 mg | | | | | | | |
| tetrahydrocannabivarin (THCv) | 0% | 0.00 mg ± 0.02 mg | | | | | | | |
| cannabidiolic acid (CBDA) | 0% | 0.00 mg ± 0.02 mg | | | | | | | |
| cannabidiol (CBD) | 1.69% | 16.04 mg ± 0.03 mg | | | | | | | |
| cannabidivarin (CBDv) | 0% | 0.00 mg ± 0.02 mg | | | | | | | |
| cannabigerolic acid (CBGa) | 0% | 0.00 mg ± 0.02 mg | | | | | | | |
| cannabigerol (CBG) | .03% | 0.26 mg ± 0.02 mg | | | | | | | |
| cannabinol (CBN) | 0% | 0.00 mg ± 0.02 mg | | | | | | | |
| cannabichromene (CBC) | 0% | 0.00 mg ± 0.02 mg | | | | | | | |

| Solvents | MT limit | 0LJ59 | LOQ | Pesticides (MT) | MT limit | 0LJ59 | LOQ | Pesticides (other) | 0LJ59 | LOQ |
|----------|----------|-------|-----|-----------------|----------|-------|-----|--------------------|-------|-----|
|----------|----------|-------|-----|-----------------|----------|-------|-----|--------------------|-------|-----|

pesticides not tested / not required

not tested / not required

| Toxic Metals | MT limit | 0LJ59 | LOQ |
|--------------|----------|-------|-----|
|--------------|----------|-------|-----|

metals not tested / not required

| Microbial | MT limit | 0LJ59 | LOQ |
|-----------|----------|-------|-----|
|-----------|----------|-------|-----|

microbial not tested

Comments

Density = .9482g/mL

All testing was completed onsite at 6073 US93N, Olney MT. Potency (cannabinoid concentration) is calculated from the equation: [cannabinoid] = [cannabinoid]_{HPLC} x volume_{dilution}/m_{dry}. Terpene concentration is calculated from the equation: [terpene] = (terpene mass)_{GCMS} / m_{dry}. Decarboxylated cannabinoid concentration is calculated from the equation XXX_{total} = 0.877 x XXX_a + XXX. Standards are used to calibrate the resulting data and estimate error using a standard estimate of error method; this is combined with error from weighing and dilution using the propagation of error formula s_g² = Σ(∂f/∂i)²s_i² where i is the contributor to error. The 95% confidence range is calculated from the equation: (concentration) ± t_{CL90} x s_g. Sampling error is not

Certified by:

Kyle Larson, MSc (Biology)
Deputy Director
6073 US93N, Olney MT 59927
406-881-2019 rdb@stlmlabs.com



B1014-001

7USC1639 Certificate of Analysis

sample ID 24963
retention ID 24963

analysis : 10/22/2020 12:01:11 PM

This Product Has Been Tested and Complies with 7USC1639(1)

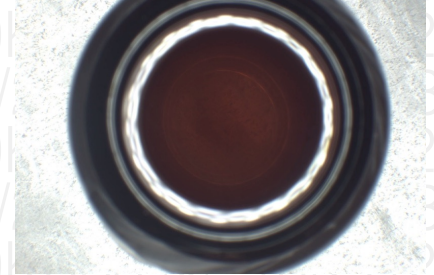
Stillwater Laboratories

certificate ID OKR38

total cannabinoids 467.9mg per 30 mL
THC± ND CBD± 459.1mg

order 8689
received 10/22/2020 12:01:11 PM
test tag
sample wgt 15.0 g

7USC1639 Infused



Inspection MSP-7.5.1.2

DESCRIPTION: Oil sample (15.00g) received in a client-labeled bottle, by commercial courier. Labeled 24963.

Potency per 30 mL

Table with columns: Compound, Amount, LOD, LOQ, error (95%CI k=2). Lists various cannabinoids and their concentrations.

± = decarbed NT = not tested NL = no limit, ND = not detected, LOD = detection limit , LOQ = quantitation limit

Large table with columns: Microbial, Solvents, Metals, Pesticides. Lists various substances and their test results (PASS, limit values).

INSTRUMENTS
potency: HPLC (LC2030C-UV)
terpenes: GCMS (QP2020/HS20)
solvents: GCMS (QP2020/HS20)
pesticides: LCMSMS (LC8060)
mycotoxins: LCMSMS (LC8060)
microbial: qPCR (AriaMx) and plating
metals: ICPMS (ICPMS-2030)

SECURITY FEATURE: WATERMARK MUST MATCH CERTIFICATE ID AND ISSUE DATE

Certified by:

Signature of Justin M Johnston

Justin M Johnston
Deputy Director

Stillwater Laboratories Inc.
MT License L00001, 7, 8
6073 US93N Suite 5
Olney MT 59927
406-881-2019

Printed
10/27/2020 4:46 PM

The data in this report is the property of Socalt and is administered by Stillwater Labs. The format, layout, and security features of this report are copyrighted by Stillwater Laboratories Inc. © 2020



ISO/IEC 17025:2017



Certificate #4961.01

https://portal.a2la.org/scopepdf/4961-01.pdf

CTLA ID: 23481
 Date Received: 11/18/2020
 Sample Name: ORG OEVOO BS 450 Mint Packaging
 Lot Number: 201117E
 Customer:

| Analysis | Method | MDL Specification | Result | Units |
|------------------------------|-------------|-------------------|----------|-------|
| Rapid Complete Micro | | | | |
| Total Plate Count | USP <2021> | 100 Report | <100 | cfu/g |
| Total Coliforms | BAM CH.4 | 10 Report | <10 | cfu/g |
| <i>E. coli</i> | USP <2022> | Report | Negative | |
| <i>Salmonella</i> | USP <2022> | Report | Negative | |
| <i>Staphylococcus aureus</i> | USP <2022> | Report | Negative | |
| Rapid Yeast and Mold | AOAC 997.02 | 10 Report | <10 | cfu/g |

11/23/2020
 DATE


 Quality Manager

Specifications provided by the Customer. Results with an asterisk (*) denote Specifications should be reviewed by the Customer. This Certificate of Analysis represents data for the sample submitted and does not constitute a guarantee of quality for the entire product from which it was taken. These results are provided for the benefit of the Customer. MDL = Method Detection Limit.