

CERTIFICATE OF ANALYSIS

PRODUCT NAME: CBD Softgels
PRODUCT STRENGTH: 10 mg
LOT NUMBER: 20232A
BEST BY DATE: 11/28/2021
SOFTGEL LOT NUMBER: [GC1020-04](#)

Physical Attributes

Test	Method	Specification	Results
Color	SOP-100	Golden to Amber	PASS
Odor	SOP-100	N/A	PASS
Appearance	SOP-100	Dry, ovoid softgel capsules in container with lid and shrinkband	PASS
Primary Package Eval.	SOP-132	Container clean and free of filth. Container caps tight and shrink bands intact	PASS
Secondary Package Eval.	SOP-132	Labeling Compliance Checked, Cartons sturdy and clean. Sufficient cushion material exists. Box taped and secure.	PASS

Review of Third-Party Analysis

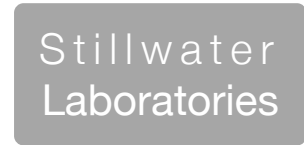
Panel	Method	Specification	Results	Pass/Fail
Potency - Total CBD	SOP-111	9.5-12.5 mg CBD LOQ**: 10 PPM† (0.001%)	10mg	PASS
Potency - D9-THC	SOP-111	None Detected LOQ: 10 PPM (0.001%)	ND	PASS
FL Compliant Pesticide Panel	SOP-111	WIP-100008 : Product specification for Softgels, Oregon Action limits apply	ND	PASS
Microbial - Stec E.Coli	SOP-111	Complies with USP 61/62	Below LOD	PASS
Microbial - Salmonella	SOP-111	Complies with USP 61/62	Below LOD	PASS
Microbial - Aspergillus	SOP-111	Complies with USP 61/62	Below LOD	PASS
CA Compliant Heavy Metal Panel	SOP-111	Arsenic (As): ≤1.5 PPM Cadmium (Cd): ≤0.5 PPM Mercury (Hg): ≤1.0 PPM Lead (Pb): ≤0.5 PPM	ND	PASS

* Level of Quantitation, † Parts Per Million

Quality Certified by: *Kei Horikawa* 9/14/2020
 Kei Horikawa Date
 Quality Control Manager



total cannabinoids	Δ^9 -THC	THCa	total THC
10 mg	0 mg	0 mg	0 mg
per capsule	CBD	CBDa	total CBD
	10 mg	0 mg	10 mg

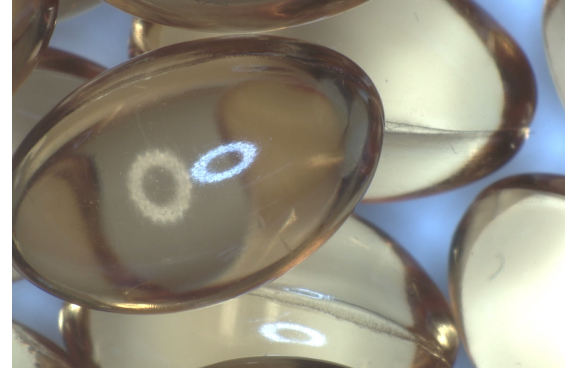


Lot# GC1020-04

<https://portal.a2la.org/scopepdf/4961-01.pdf>

Sample Handling

test ID	sample wt	19.0 g
type	order	7621
lab ID	sample date	6/22/2020
unit capsule	unit weight	0.7 g



Methods

	method	equipment
weights	MSP-7.3.1.3	AUX120.1
potency	MSP-7.5.1.5	LC-2030
terpenes	MSP-7.5.1.7	QP2020/HS20
pesticides	MSP-7.5.1.8	LC-8060
mycotoxins	MSP-7.5.1.8	LC-8060
microbial	MSP-7.5.1.9	Hardy Diag
solvents	MSP-7.5.1.6	QP2020/HS20
metals	MSP-7.5.1.1	ICPMS2030

Potency	per capsule	estimated error	Terpenes	%	estimated error	%	estimated error	%	estimated error
tetrahydrocannabinolic acid (THCa)	.01%	0 mg ± 0.01 mg	terpenes not tested / not required						
Δ^9 -tetrahydrocannabinol (Δ^9 THC)	0%	0 mg ± 0.01 mg							
Δ^8 -tetrahydrocannabinol (Δ^8 THC)	0%	0 mg ± 0.01 mg							
tetrahydrocannabivarin (THCv)	0%	0 mg ± 0.01 mg							
cannabidiolic acid (CBDa)	.02%	0 mg ± 0.01 mg							
cannabidiol (CBD)	1.47%	10 mg ± 0.08 mg							
cannabidivarin (CBDv)	.02%	0 mg ± 0.01 mg							
cannabigerolic acid (CBGa)	0%	0 mg ± 0.01 mg							
cannabigerol (CBG)	0%	0 mg ± 0.01 mg							
cannabinol (CBN)	0%	0 mg ± 0.01 mg							
cannabichromene (CBC)	0%	0 mg ± 0.01 mg							

Solvents	MT limit	0FR11	LOQ	Pesticides (MT)	MT limit	0FR11	LOQ	Pesticides (other)	0FR11	LOQ
solvents not tested / not required				abamectin	0.00 ppm	<10ppb		acephate	0.00 ppm	<10ppb
				acequinocyl	0.00 ppm	<10ppb		acetamiprid	0.00 ppm	<10ppb
				bifenazate	0.00 ppm	<10ppb		aldicarb	0.00 ppm	<10ppb
				bifenthrin	0.00 ppm	<10ppb		azoxystrobin	0.00 ppm	<10ppb
				chloromequat cl.	0.00 ppm	<10ppb		boscalid	0.00 ppm	<10ppb
				cyfluthrin	0.00 ppm	<80ppb		carbaryl	0.00 ppm	<10ppb
				diaminozide	0.00 ppm	<10ppb		carbofuran	0.00 ppm	<10ppb
				etoxazole	0.00 ppm	<10ppb		chlorantraniliprole	0.00 ppm	<10ppb
				fenoxycarb	0.00 ppm	<10ppb		chlorpyrifos	0.00 ppm	<10ppb
				imazalil	0.00 ppm	<10ppb		clofentazine	0.00 ppm	<10ppb
				imidacloprid	0.00 ppm	<10ppb		cypermethrin	0.00 ppm	<10ppb
				myclobutanil	0.00 ppm	<10ppb		diazinon	0.00 ppm	<10ppb
				paclobutrazol	0.00 ppm	<10ppb		dichlorvos	0.00 ppm	<10ppb
				pyrethrins	0.00 ppm	<10ppb		dimethoate	0.00 ppm	<10ppb
			spinosad	0.00 ppm	<10ppb		etofenprox	0.00 ppm	<10ppb	
			spiromesifen	0.00 ppm	<10ppb		fenpyroximate	0.00 ppm	<10ppb	
			spirotetramat	0.00 ppm	<10ppb		fenprophamid	0.00 ppm	<10ppb	
			trifloxystrobin	0.00 ppm	<10ppb		fludioxonil	0.00 ppm	<10ppb	
							hexythiazox	0.00 ppm	<10ppb	
							kresoxym-methyl	0.00 ppm	<10ppb	
							malathion	0.00 ppm	<10ppb	
							metalaxyl	0.00 ppm	<10ppb	
							methiocarb	0.00 ppm	<10ppb	
							methomyl	0.00 ppm	<10ppb	
							oxamyl	0.00 ppm	<10ppb	
							permethrins	0.00 ppm	<10ppb	
							phosmet	0.00 ppm	<10ppb	
							piperonyl butoxide	0.00 ppm	<10ppb	
							prallethrin	0.00 ppm	<10ppb	
							propiconazole	0.00 ppm	<10ppb	
							pyridaben	0.00 ppm	<10ppb	
							spiroxamine	0.00 ppm	<10ppb	
							tebuconazole	0.00 ppm	<10ppb	
							thiacloprid	0.00 ppm	<10ppb	
							thiamethoxam	0.00 ppm	<10ppb	

Toxic Metals	MT limit	0FR11	LOQ
arsenic	2 ppm	0.0 ppm	<10ppb
cadmium	4.1 ppm	0.0 ppm	<10ppb
lead	1.2 ppm	0.0 ppm	<10ppb
mercury	0.4 ppm	0.0 ppm	<10ppb

Comments

Target concentration 10mg, 5g capsule

Microbial	MT limit	0FR11	LOQ
<i>E. coli</i>	10 CFU	0 CFU	<10 CFU/g
Salmonella sp.	10 CFU	0 CFU	<10 CFU/g
molds	10000 CFU	0 CFU	<10k CFU/g
Aflatoxin B1,B2,G1,G2	20 ppb	0 ppb	<20 ppb
Ochratoxin A	20 ppb	0 ppb	<20 ppb

• All testing was completed onsite at 6073 US93N, Olney MT • Potency (cannabinoid concentration) is calculated from the equation: [cannabinoid] = [cannabinoid]_{HPLC} x volume_{dilution}/m_{dry}. Terpene concentration is calculated from the equation: [terpene] = (terpene mass)_{GCMS} / m_{dry}. •• Decarboxyted cannabinoid concentration is calculated from the equation XXX_{total} = 0.877 x XXXa + XXX ••• Standards are used to calibrate the resulting data and estimate error using a standard estimate of error method; this is combined with error from weighing and dilution using the propagation of error formula s_g² = Σ (∂f/∂i)²s_i² where i is the contributor to error. The 95% confidence range is calculated from the equation: (concentration) ± t_{CL90} x s_g. Sampling error is not

Certified by:

Ron Brost

Ron Brost, PhD PEng (Chem)
Director
6073 US93N, Olney MT 59927
406-881-2019 rdb@stwlabs.com



total cannabinoids	Δ9-THC	THCa	total THC
?	? mg	? mg	? mg
per capsule	CBD	CBDa	total CBD
	? mg	? mg	? mg

This Product Has Been Tested and Complies with 7USC1639o(1) Definition of Hemp



ISO/IEC 17025:2017
ACCREDITED
 Certificate #4961.01

Stillwater Laboratories

<https://portal.a2la.org/scopepdf/4961-01.pdf>

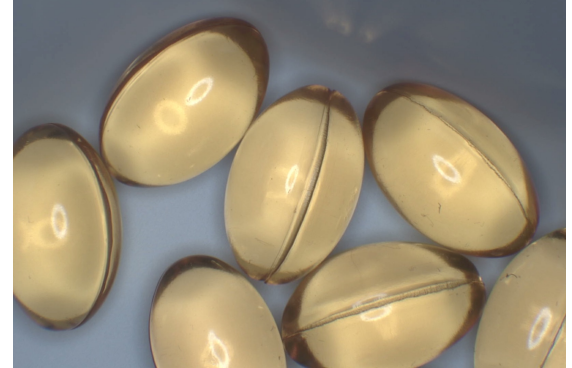
Lot# 20232A

Sample Handling

test ID	sample wt	18.6 g
type	order	8330
lab ID 0JH61	sample date	9/11/2020
unit capsule	unit weight	18.6 g

Methods

	method	equipment
weights	MSP-7.3.1.3	AUX120.1
potency	MSP-7.5.1.5	LC-2030
terpenes	MSP-7.5.1.7	QP2020/HS20
pesticides	MSP-7.5.1.8	LC-8060
mycotoxins	MSP-7.5.1.8	LC-8060
microbial	MSP-7.5.1.1	AriaMx RTPCR
solvents	MSP-7.5.1.6	QP2020/HS20
metals	MSP-7.5.1.1	ICPMS2030



Potency	per capsule	estimated error	Terpenes	%	estimated error	%	estimated error	%	estimated error
---------	-------------	-----------------	----------	---	-----------------	---	-----------------	---	-----------------

not tested

terpenes
not tested / not required

Pesticides (MT)	MT limit	0JH61	LOQ	Pesticides (other)	0JH61	LOQ
-----------------	----------	-------	-----	--------------------	-------	-----

pesticides
not tested / not required

not tested /
not required

Toxic Metals	MT limit	0JH61	LOQ
--------------	----------	-------	-----

metals
not tested / not required

Microbial	MT limit	0JH61	LOQ
<i>E. coli</i>	10 CFU	0 CFU	<10 CFU/g
Salmonella sp.	10 CFU	0 CFU	<10 CFU/g
molds	10000 CFU	0 CFU	<10k CFU/g

Comments

• All testing was completed onsite at 6073 US93N, Olney MT • Potency (cannabinoid concentration) is calculated from the equation: [cannabinoid] = [cannabinoid]_{HPLC} x volume_{dilution}/m_{dry}. Terpene concentration is calculated from the equation: [terpene] = (terpene mass)_{GCMS} / m_{dry}. ••• Decarboxyted cannabinoid concentration is calculated from the equation XXX_{total} = 0.877 x XXX_a + XXX •••• Standards are used to calibrate the resulting data and estimate error using a standard estimate of error method; this is combined with error from weighing and dilution using the propagation of error formula s_g² = Σ(∂f/∂i)²s_i² where i is the contributor to error. The 95% confidence range is calculated from the equation: (concentration) ± t_{CL90} x s_g. Sampling error is not

Certified by:

Kyle Larson, MSc (Biology)
 Deputy Director
 6073 US93N, Olney MT 59927
 406-881-2019 rdb@stwlabs.com